

HOUSE & LAND



*Images are for Illustration Purposes Only

LOT 206 HEARTLAND ESTATE, MORWELL



Package Offer
\$616,600.00

Design Details – Tia-Rose 290V

House Size : 29.0sq

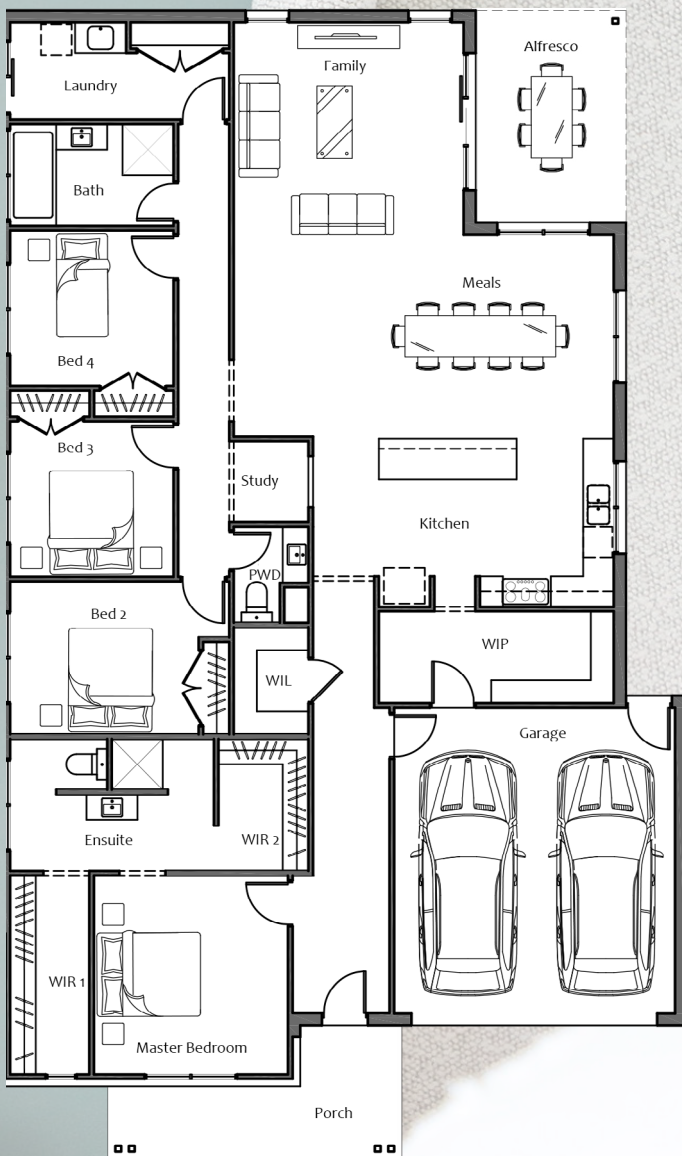
Land Details

Lot Size : 629m²

Land Price \$273,900.00

V-Essential Inclusions

- Colorbond Roofing
- Eaves to front façade
- Garage Panel Door with Remotes
- Brick Infills above windows
- 20mm Stone benchtops to Kitchen, Ensuite & Bathroom
- 4No. Pot drawers to kitchen
- Extensive selection of Floor Coverings : Laminate, Carpet & Tiles
- Laminate Flooring to Entry, Family & Rear Hallway
- Dulux 3 coat paint system
- Gas ducted heating system
- Overhead cupboards to Kitchen
- Toilet roll holders & towel rails
- Dishwasher
- Technika 900mm appliances
- Tiled Shower bases to Ensuite & Bathroom
- Split system air conditioner
- LED Downlights
- Site Cost Allowance



For more details speak with our Home Advisor, Jessica Hine.

Ph: 0407 244 625

Email: jhine@vartel.com.au

www.vartel.com.au

Terms & Conditions Apply