

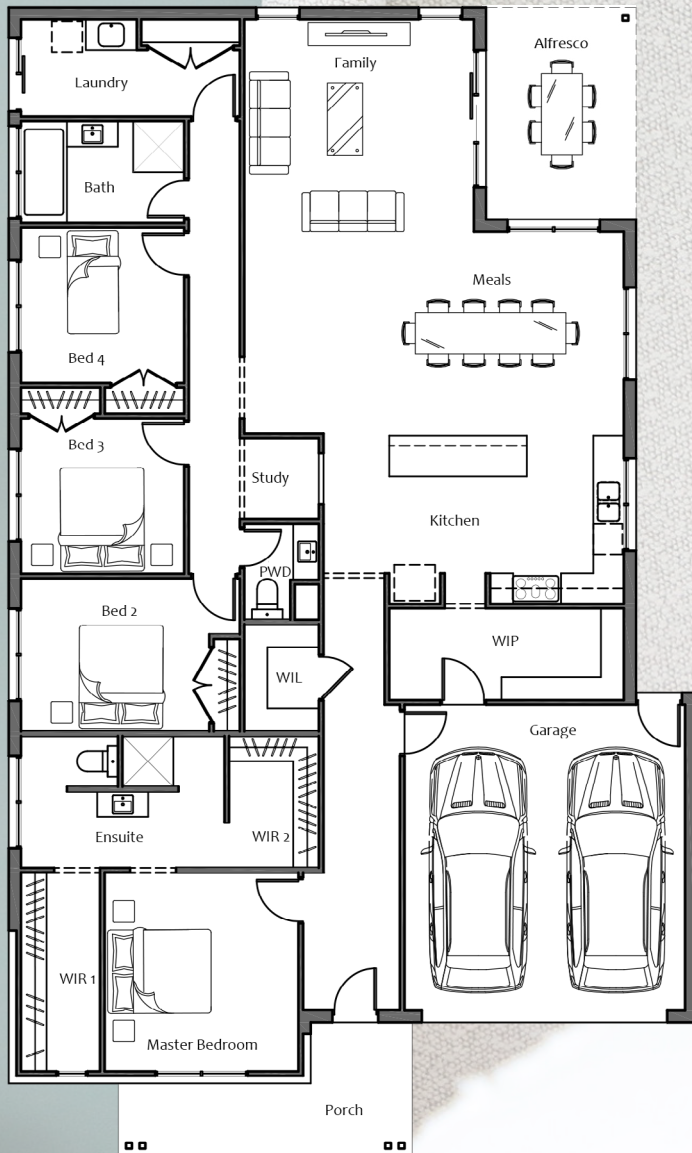
# HOUSE & LAND

**Nth**  
Newborough  
3825  
**Qtr**



\*Images are for Illustration Purposes Only

LOT 18 ALCOTT DRIVE, NEWBOROUGH



**Package Offer**  
**\$597,700.00**

**Design Details – Tia-Rose 290V**

House Size : 29.0sq

**Land Details**

Lot Size : 684m2

Land Price \$255,000.00

**V-Essential Inclusions**

- Colorbond Roofing
- Eaves to front façade
- Garage Panel Door with Remotes
- Brick Infills above windows
- 20mm Stone benchtops to Kitchen, Ensuite & Bathroom
- 4No. Pot drawers to kitchen
- Extensive selection of Floor Coverings : Laminate, Carpet & Tiles
- Laminate Flooring to Entry, Family & Rear Hallway
- Dulux 3 coat paint system
- Gas ducted heating system
- Split system air conditioner
- Overhead cupboards to Kitchen
- Toilet roll holders & towel rails
- Dishwasher
- Technika 900mm appliances
- Tiled Shower bases to Ensuite & Bathroom
- LED Downlights
- Site Cost Allowance

For more details speak with our Home Advisor, Jessica Hine.

Ph: 0407 244 625

Email: [jhine@vartel.com.au](mailto:jhine@vartel.com.au)

[www.vartel.com.au](http://www.vartel.com.au)

Terms & Conditions Apply