

HOUSE & LAND

Nth
Newborough
3825
Qtr



*Images are for Illustration Purposes Only

LOT 31 ALCOTT DRIVE, NEWBOROUGH



Package Offer
\$483,900.00

Design Details – Gemstone 200V

House Size : 20.2sq

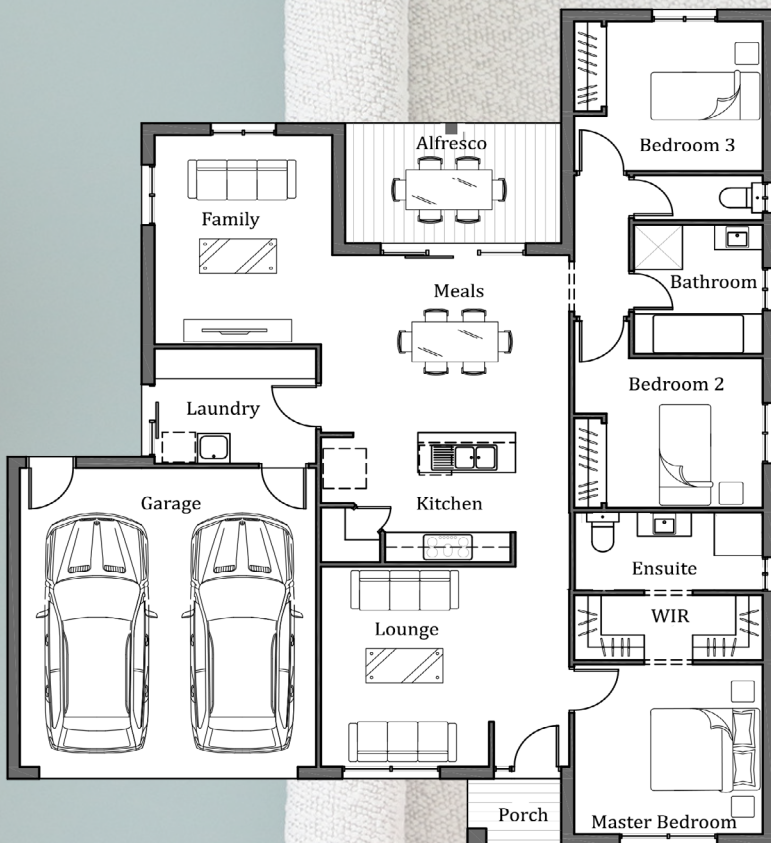
Land Details

Lot Size : 547m2

Land Price \$215,000.00

V-Essential Inclusions

- Colorbond Roofing
- Eaves to front façade
- Garage Panel Door with Remotes
- Brick Infills above windows
- 20mm Stone benchtops to Kitchen, Ensuite & Bathroom
- 4No. Pot drawers to kitchen
- Extensive selection of Floor Coverings : Laminate, Carpet & Tiles
- Laminate Flooring to Entry, Family & Rear Hallway
- Dulux 3 coat paint system
- Gas ducted heating system
- Split system air conditioner
- Overhead cupboards to Kitchen
- Toilet roll holders & towel rails
- Dishwasher
- Technika 900mm appliances
- Tiled Shower bases to Ensuite & Bathroom
- LED Downlights
- Site Cost Allowance



For more details speak with our Home Advisor, Jessica Hine.

Ph: 0407 244 625

Email: jhine@vartel.com.au

www.vartel.com.au

Terms & Conditions Apply